

**AP MORGAN**



**Harebell Gardens, Birmingham**  
Offers in the region of £180,000



**Features:**

- Two double bedrooms
- Spacious lounge
- Kitchen/diner
- Grass laid garden
- Plenty of storage
- Off-street parking

**Description:**

This two-bedroom, semi-detached house presents a spacious lounge, a kitchen/diner, two double bedrooms, family bathroom, off-street parking, paved & grass laid garden.

Approaching the property there is a concrete off street parking bay, a front gate allows access to the property, and front garden. There is rear access through a side gate.

Entering the ground floor, there is a porch with integral storage cupboard and the hall leading to a spacious lounge which has plenty of space for multiple suites and gives access to the rear garden through French doors. The kitchen/diner hosts plenty of counterspace, as well as space for a dining table and chairs. There is a gas hob and electric oven as well as space/plumbing for freestanding appliances.

Ascending to the first floor there is Bedroom one, a large double, Bedroom two is similarly a large double also featuring integral storage. The family bathroom presents a washbasin, WC and a bath/shower.

The garden opens to a paved patio area, perfect for storage or outdoor furniture and continues to a grass laid lawn bordered by a paved path and wooden panel fencing.

Situated in Birmingham, a short drive to local amenities, this property is close to schools and supermarkets, shops, restaurants, and bars. Local public transport links are also nearby as well as the M42 allowing access to major road networks.





**Details:**

**Porch**

**Hall**

**Lounge** 14'8" x 17'11" (4.47m x 5.46m) Both Max

**Kitchen /Diner** 12'9" x 11'9" (3.89m x 3.58m) Both Max

**Bedroom One** 8'10" x 17'11" (2.7m x 5.46m) Both Max

**Bedroom Two** 14'10" x 8'8" (4.52m x 2.64m) Both Max

**Bathroom** 8'2" x 8'9" (2.5m x 2.67m) Both Max



**EPC Rating:** To be confirmed

**Council Tax Band:** B (tbc by solicitors).

**Tenure:** Freehold (tbc by solicitors).

For more information or to arrange a viewing, please call us on 0121 827 6827.

How can we help you?

Need a mortgage?

We recommend Wiser Mortgage Advice. They will search the market for you to ensure you get the right lender and mortgage deal. They typically achieve mortgage offers much more quickly than if you were dealing with lenders directly. The initial appointment is free and without obligation. Call us on 0121 827 6827, or visit their website for more information: [www.wisermortgageadvice.co.uk](http://www.wisermortgageadvice.co.uk)

Property to sell?

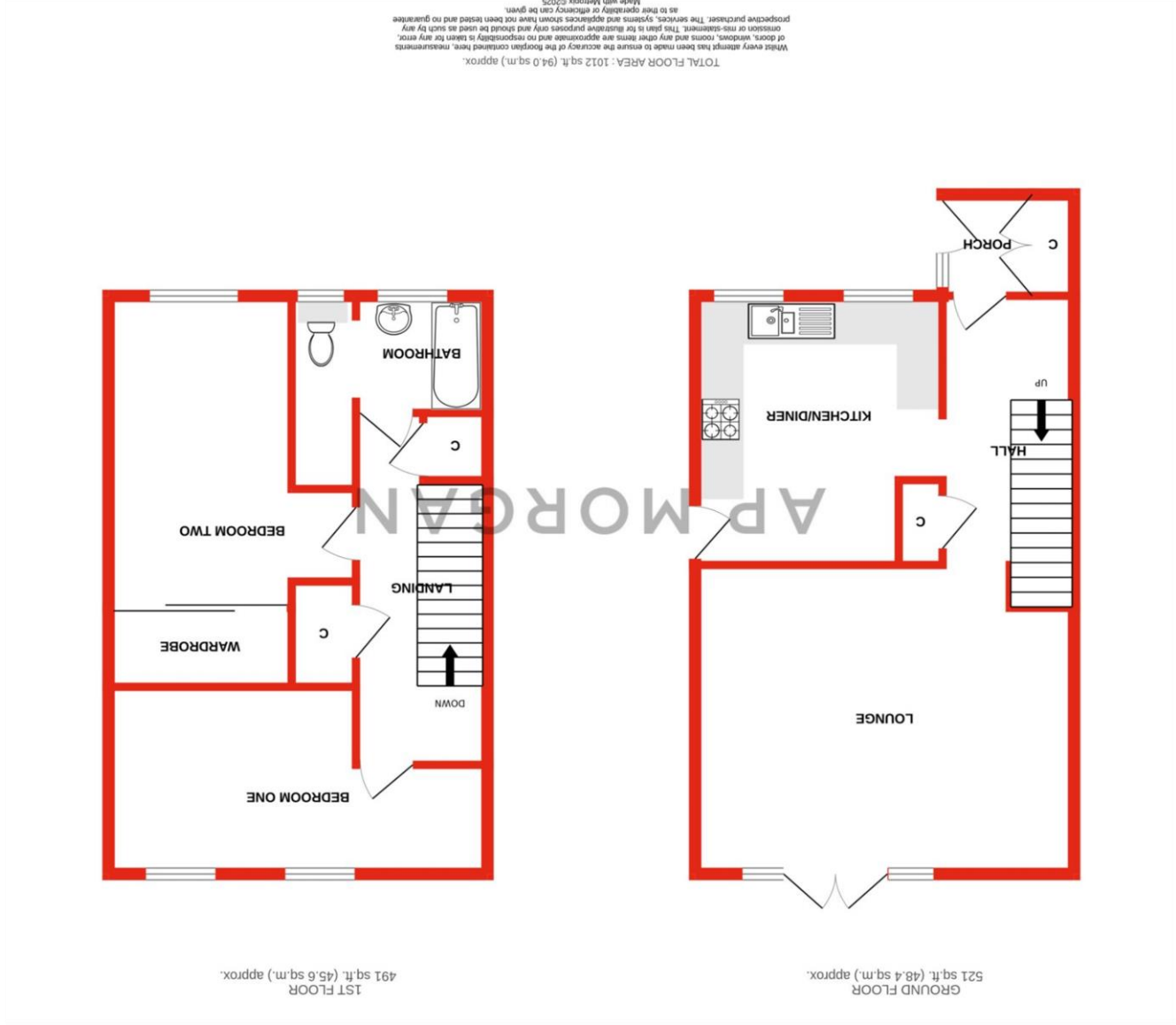
If you need to sell a property in order to buy, you ideally need to be on the market at least (and preferably Sold STC) before viewing, otherwise you may lose out to other buyers when the right property comes along. In these circumstances we can get your property 'live' quickly. Just book a free valuation and we will visit your property and discuss your needs.

Need a solicitor?

A good solicitor can save you literally weeks of time in the buying/selling process, reducing the stress levels of all involved. We will instruct a reputable firm that is competitive on cost and very reliable. Just ask for a quote.

Need a removal company and storage?

A professional removal company takes the stress out of moving. Knowing that your belongings are safe and insured far outweighs any small savings by trying to do it yourself or using a man-and-a-van service. We work closely with and recommend Cube Removals as the leading local firm. For peace of mind and a reliable service call them on 0800 193 0000 or visit their website, [cuberemovals.co.uk](http://cuberemovals.co.uk), to arrange a survey.



No statement in these details is to be relied upon as representation of fact, and purchasers should satisfy themselves by inspection or otherwise as to the accuracy of the statements contained within. These details do not constitute any part of any offer or contract. AP Morgan and their employees and agents do not have any authority to give any warranty or representation whatsoever in respect of this property. These details and all statements herein are provided without any responsibility on the part of AP Morgan or the vendors. Equipment: AP Morgan has not tested the equipment or central heating system mentioned in these particulars and the purchasers are advised to satisfy themselves as to the working order and condition. Measurements: Great care is taken when measuring, but measurements should not be relied upon for ordering carpets, equipment, etc. The Laws of Copyright protect this material. AP Morgan is the Owner of the copyright. This property sheet forms part of our database and is protected by the database right and copyright laws. No unauthorised copying or distribution without permission.